

# 4

easy steps...

- 1 Install the DriverLINX® Software.
- 2 Install the Board.
- 3 Configure DriverLINX®.
- 4 Start the Test Panel.

**...and your Keithley PCI board will be working for you.**

**Customer Service: 1-888-KEITHLEY**

**Free Downloads:** [www.keithley.com/daqsoftware](http://www.keithley.com/daqsoftware)

Current Virtual Instruments (VIs) for LabVIEW.

ExcelLINX - Acquires data directly into an Excel spreadsheet; requires no programming.

VisualSCOPE - Digital storage oscilloscope interface for Windows; requires no programming.

**Register On-line:** [www.keithley.com/register](http://www.keithley.com/register)

**Browse Application Notes and White Papers:** [www.keithley.com/daqnotes](http://www.keithley.com/daqnotes)

**Frequently Asked Questions:** [www.keithley.com/daqfaq](http://www.keithley.com/daqfaq)

**KEITHLEY**

A Greater Measure of Confidence

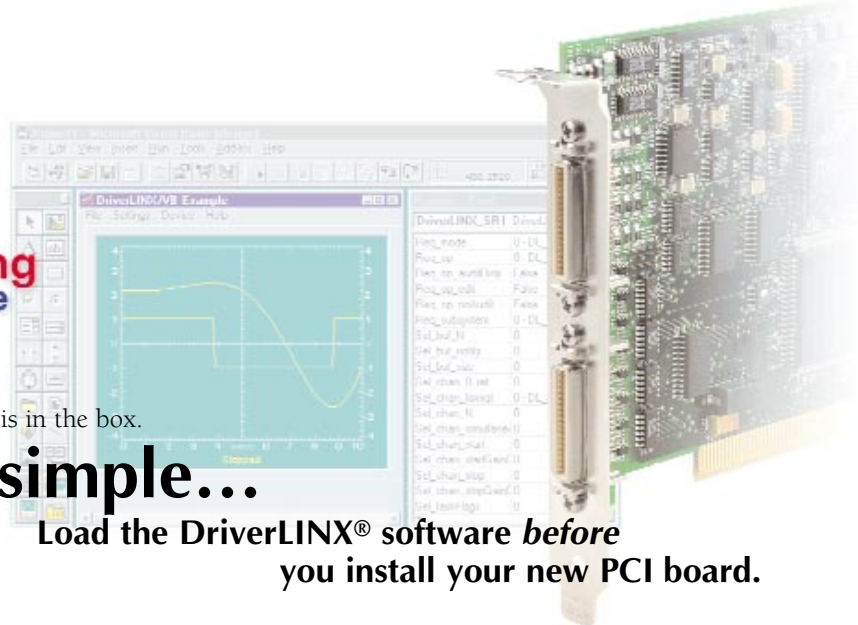
**KEITHLEY**

**up & running software**

Everything you need is in the box.

**Keep it simple...**

**Load the DriverLINX® software before you install your new PCI board.**



# 1 Install the DriverLINX® Software.

## Place the DriverLINX CD into Your Computer's Drive

Setup will start automatically.

The DriverLINX Browser Introduction screen appears, followed by the DriverLINX CD Navigator screen.

### Read the On-screen Help Files

1. Select **Read Me First**.
2. Select **Exit**.

### Install the Drivers

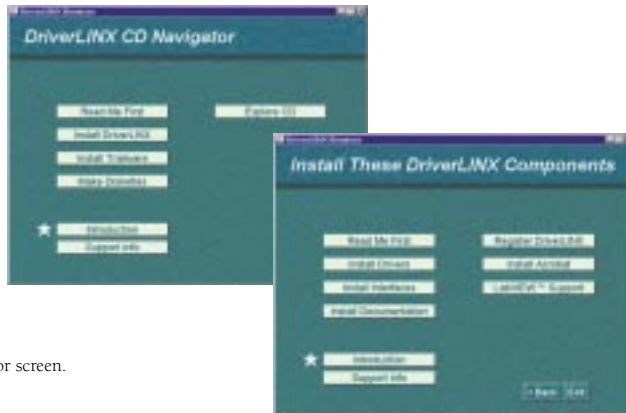
1. Select **Install DriverLINX**.
2. Select **Install Drivers**.
3. Follow the on-screen instructions.

### Install the API Interfaces

1. Select **Install Interfaces**.
2. Follow the on-screen instructions.

### Exit the Installation

1. Select **Exit** to return to the Navigator screen.
2. Select **Exit** to exit the installation.
3. Select **Done** to exit the CD Navigator.
4. From the "System Settings Changed" dialog box, select **Yes**.
5. Shut down Windows, then power your computer OFF.



# 2 Install the Board.

1. Remove the computer chassis cover.
2. Locate an empty PCI expansion slot.
3. Remove the dummy mounting bracket, keeping the mounting screw.
4. Remove the new board from the anti-static packaging.
5. Insert the PCI connector of the board into the selected PCI slot.
6. Secure the mounting bracket of the board to the chassis, using the retaining screw from the dummy mounting bracket.
7. Reinstall the chassis cover.

**CAUTION:** Your PCI board is sensitive to static discharge. Take care to prevent static discharge before and while handling your PCI card.

# 3 Configure DriverLINX®.

1. Turn ON the computer. The Configuration Wizard will start after boot-up is complete and you log in.
2. Select **Continue**.
3. Follow the on-screen instructions to configure your new board and DriverLINX to work together.
4. Reboot your computer when instructed to by the Wizard.

# 4 Start the Test Panel.

1. Click the Windows **Start** tab.
2. Locate the **Programs→DriverLINX→Test Panels** submenu.
3. Select the appropriate test panel for your card:  

<b>If your card is ...</b>	<b>Select ...</b>
Digital I/O	AIO Panel
Analog I/O or Analog/Digital I/O	AIO Panel
Counter/Timer	CTM Panel
4. The starting screen for the selected test panel should appear. If the test panel does not start, refer to the troubleshooting section of the Keithley User's Manual.
5. Close the test panel.

**Congratulations! Your DriverLINX software and board are properly installed and working together!**



**KEITHLEY**

Keithley Instruments, Inc. 28775 Aurora Road Cleveland, OH 44139 440-248-0400 Fax: 440-248-6168 <http://www.keithley.com>

PA-722 Rev. B / 8-00